



AVON | WEST  
STRATFORD

# The Gleiser

Square Footage: 1,772

Bedrooms: 3

Bathrooms: 2.5

Stores: 2

Lot Width: 44 ft.

3 bedroom, 2 storey, double garage doors, 2 1/2 baths, large second floor bedrooms, second floor laundry.

**Bromberg  
Homes**

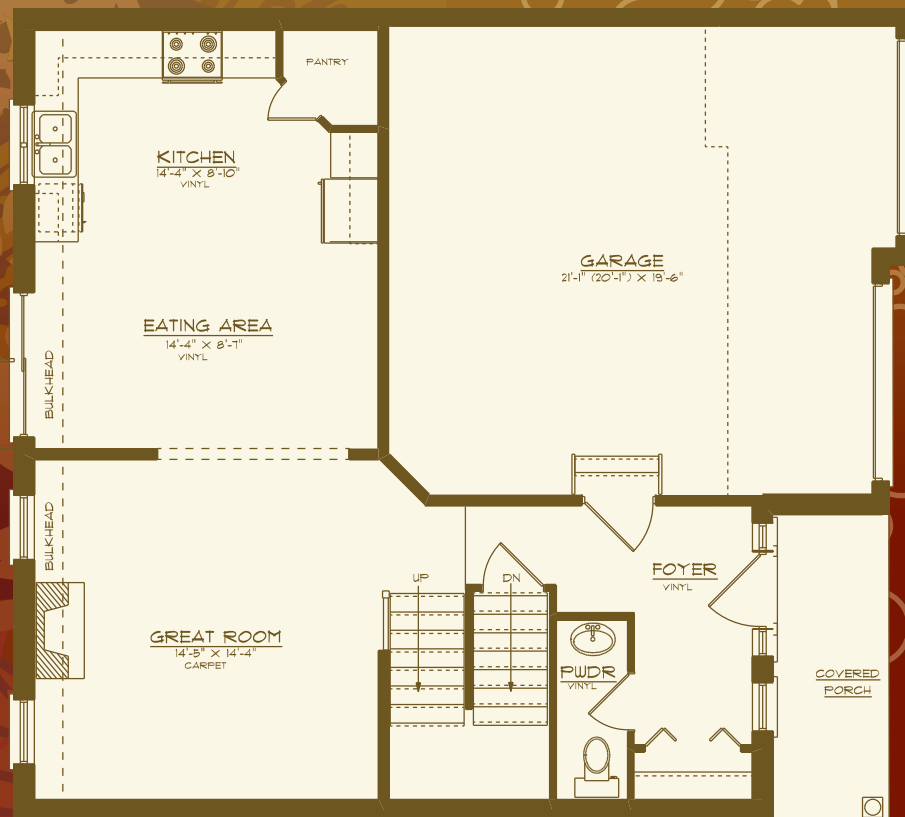
Division of Werner Bromberg Ltd.



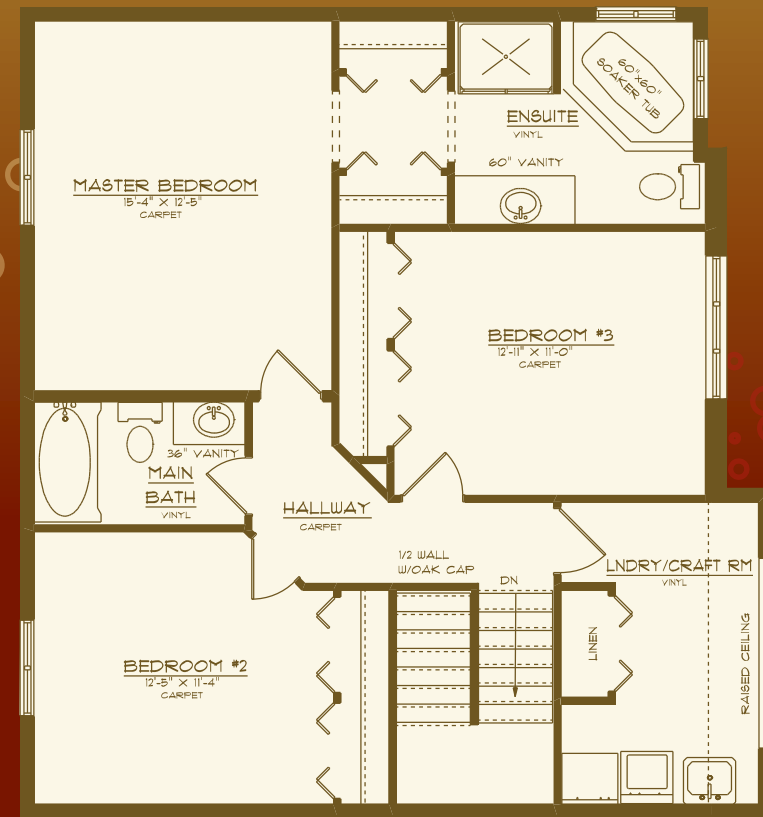


# The Gleiser 1,772 sq. ft.

AVON | WEST  
STRATFORD



Main Floor  
750 Sq. Ft.



Upper Floor  
1,022 Sq. Ft.



Division of Werner Bromberg Ltd.

All drawings are artist concepts of the final product and may be revised and/or improved as necessitated by Architectural controls. All floor plans are approximate dimensions. Floor areas shown include "open to below" but do not include garage or basement areas. E. & O. E.

[www.bromberghomes.com](http://www.bromberghomes.com)